



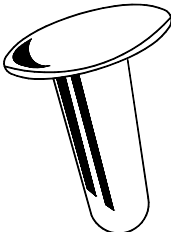


For Tools see Section 5  
 För verktyg se kapitel 5  
 Für Werkzeug siehe Abschnitt 5  
 Pour Outils voir Secteur 5

				<b>Base Materials Brass (M)</b>							
				<b>GrundmaterialMässing (M)</b>							
				<b>Finishes: 00, 07, 14, 20, 36</b>							
				<b>Ytbehandlingar: 00, 07, 14, 20, 36</b>							
Art Code	A mm	B mm	Kgs/ 1000	Pcs/ Box		Art Code	A mm	B mm	Kgs/ 1000	Pcs/ Box	
504-7 T	7	3.1	0.22	5000		505-5 R	5	7	0.2	5000	
						505-7 R	7	7	0.24	5000	
						505-8 R	8	7	0.3	5000	
						505-9 R	9	7	0.32	5000	
504-8 T	8	4	0.3	5000		506- 8 R	8	9.8	0.38	5000	
504-10 T	10.5	4	0.45	5000		506- 9 R	9	9.8	0.4	5000	
						506- 10 R	10	9.8	0.47	5000	
						506- 12 R	12	9.8	0.51	5000	
						506- 14 R	14	9.8	0.55	2500	
508-13 T	13	7.7	0.73	1000		508-17 R	17	12.5	1.2	500	

Which fits which?  
Vilka passar ihop?

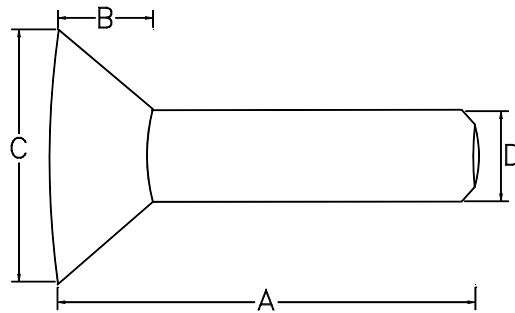
Art.No. Art.Nr.	Hatt/Cap Ø	Nit/ Backs	Längd/ Length	For Mtrl thickness		Base Material M=Brass Grundmaterial M=Mässing
				Min	Max	
504-7 T	7.0mm	505-5 R	5	1	2.5	
		505-7 R	7	2	4.5	
		505-8 R	8	3	5.5	
		505-9 R	9	4	6.5	
						

Art.No. Art.Nr.	Hatt/Cap Ø	Nit/ Backs	Längd/ Length	For Mtrl thickness		Capped Rivet	
				Min	Max	Art.No/Art.Nr	
		506-8 R	8mm	3	5.5	507-8 R D	mot order
504-8 T	8	506-9 R	9mm	4	6.5	507-9 R D	mot order
		506-10 R	10mm	5	7.5	507-10 R D	mot order
504-10 T	10.5	506-12 R	12mm	6	8.5	507-12 R D	mot order
		506-14 R	14mm	8	10.5	507-14 R D	mot order
							

Art.No.	Cap Ø	Backs	Length	For Mtrl thickness	
508-13 T	12.5	508-17 R	17mm	12	13.5

Finishes:		Ytbehandlingar:	
00 = Self Coloured/Polished	Stock-Item	00 = Obehandlad/polerad	lagervara
20 = Bright Nickel	Stock-Item	07 = Svart Oxiderad	lagervara
07 = Black Oxidised	Stock-Item	20 = Förnicklad	lagervara
On request:		På begäran:	
14 = Zinc Olive Drab	Against Order	14 = Grönkromaterad	mot order
22 = Matt Nickel	Against Order	22 = Matt Nickel	mot order
24 = Antique Silver	Against Order	24 = Antik Silver	mot order
36 = Antique Brass	Against Order	36 = Antik Mässing	mot order
37 = Antique Copper	Against Order	37 = Antik Koppar	mot order
38 = Copper	Against Order	38 = Koppar	mot order

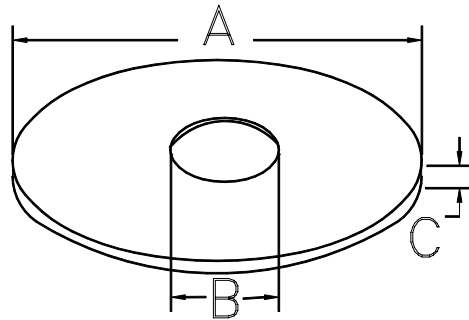
504-10 T M00 kan också levereras med FÖRETAGSLOGO eller  
NAMN  
5000 st/förpackning  
504-10 T M00 can also be delivered with COMPANYLOGO or NAME  
5000 pcs/box



Description	Art Code	Material Code	A mm	B mm	C mm	D mm	Kg/1000	PCS/Box
SFN 4x10	82-4x10	A00	10	2	10	4	0.46	1000
SFN 4x12	82-4x12	A00	12	2	10	4	0.54	1000
SFN 4x14	82-4x14	A00	14	2	10	4	0.61	1000
SFN 4x16	82-4x16	A00	16	2	10	4	0.65	1000
SFN 4x16	82-4x16	K00	16	2	10	4	2.23	1000
SFN 4x18	82-4x18	K00	18	2	10	4	2.45	1000
SFN 4x22	82-4x22	K00	22	2	10	4	2.94	1000
SFN 4x8	82-4x8	A00	8	2	10	4	0.42	1000
SFN 4x8	82-4x8	K00	8	2	10	4	1.35	1000
SFN 5x8	82-5x8	A00	8	2	13	5	0.73	1000
SFN 5x8	82-5x8	K00	8	2	13	5	2.54	1000
SFN 5x10	82-5x10	A00	10	2	13	5	0.84	1000
SFN 5x12	82-5x12	A00	12	2	13	5	0.97	1000
SFN 5x14	82-5x14	A00	14	2	13	5	1.05	1000
SFN 5x16	82-5x16	A00	16	2	13	5	1.08	1000
SFN 5x20	82-5x20	A00	20	2	13	5	1.32	1000
SFN 5x26	82-5x26	A00	26	2	13	5	1.64	1000
SFN 5x36	82-5x36	A00	36	2	13	5	2.20	1000
SFN 5x38	82-5x38	A00	38	2	13	5	2.20	500
SFN 5x40	82-5x40	A00	40	2	13	5	2.30	500
SFN 6x12	82-6x12	A00	12	2	15	6	1.34	1000
SFN 6x18	82-6x18	A00	18	2	15	6	1.86	1000
SFN 6x36	82-6x36	A00	36	2	15	6	3.06	1000
SFN 6x40	82-6x40	A00	40	2	15	6	3.44	500

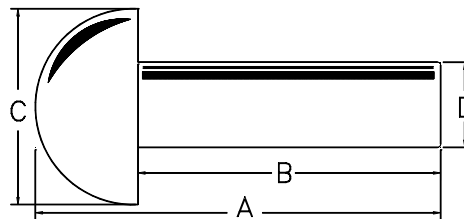
Materials:	Finishes/Ytbehandlingar:	On request:
A = Aluminium	00 = Self Coloured/Polished	24 = Antique Silver
K = Copper/Koppar	03 = Brown oxidised/Brunoxiderat	36 = Antique Brass
	07 = Black Oxidised	37 = Antique Copper
	10 = Zink	38 = Copper
	14 = Zinc Olive Drab	
	20 = Bright Nickel	

Washers for Rivets  
Brickor för nitar  
Scheiben  
Plaques



Art Description	Art Code	Material Code	A mm	B mm	C mm	D mm	Kg/ 1000	PCS/ Box
19x3.8x1.0	82-19	A00	19	3.8	1.0		0.73	2500
11x3.8x1.2	82-3.8	A00	11	3.8	1.2		0.28	1000
11x3.8x1.2	82-3.8	K00	11	3.8	1.2		0.85	1000
10x4.1x1.0	82-4.1	A00	10	4.1	1.0		0.18	1000
12x4.8x1.2	82-4.8	A00	12	4.8	1.2		0.28	1000
12x5.3x1.2	82-5.3	A00	12	5.3	1.2		0.27	1000
10.2x4.5x0.5	555	J10	10.2	4.5	0.5		0.21	1000
16x6.25x2.0	556	A03	16	6.25	2.0		0.91	1000

KN-Rivets  
KN-Nitar  
KN-Nieten  
KN-Rivets

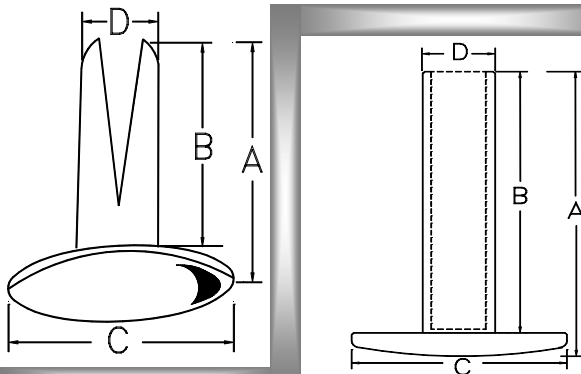


Art Description	Art Code	Material Code	A mm	B mm	C mm	D mm	Kg/ 1000	PCS/ Box
KN 4.8x10	83-4.8X10	A00	13	10	8.5	4.8	0.75	1000
KN 5x10	83-5X10	A00	13	10	8.5	5	0.82	1000
KN 5x12	83-5X12	A00	15	12	8.5	5	0.93	1000
KN 5x16	83-5X16	A00	19	16	8.5	5	1.12	1000
KN 5x20	83-5X20	A00	23	20	8.5	5	1.36	1000
KN 5x36	83-5X36	A00	39	36	8.5	5	2.16	1000
KN 5x40	83-5X40	A00	43	40	8.5	5	2.33	500
KN 5x45	83-5X45	A00	48	45	8.5	5	2.64	500

Materials:	Finishes/Ytbehandlingar:	On request:
A= Aluminium	00 = Self Coloured/Polished	24 = Antique Silver
K= Copper/Koppar	03=Brown oxidised/Brunoxiderat	36 = Antique Brass
J= Steel/Järn	07 = Black Oxidised	37 = Antique Copper
	10=Zink	38 = Copper
	14 = Zinc Olive Drab	
	20 = Bright Nickel	

Art Code	Mtrl Code	A mm	B mm	C mm	D mm	Kg/ 1000	PCS/ Box
540-11	J20	12	10.7	8	3.6	0.8	1000

**Bifurcated Rivet**

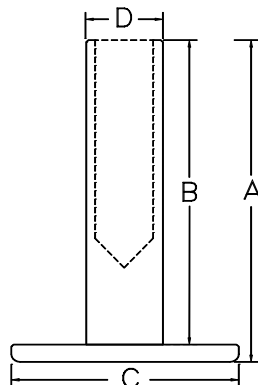


**Tubular rivet**

Art Code	Mtrl Code	A MM	B MM	C MM	D MM	Kgs/ 1000	PCS/ Box
545-8x8	J20	9.5	8.3	8	4.2	0.42	1000
545-8x8	J36	9.5	8.3	8	4.2	0.45	1000
545-10x8	J20	11.6	10.3	8	4.2	0.54	1000
545-10x8	J36	11.6	10.3	8	4.2	0.52	1000

Art Code	Mtrl Code	A MM	B MM	C MM	D MM	Kgs/ 1000	PCS/ Box
550-9	J10	10.5	9	9.2	3.8	0.95	1000
550-10	J10	11.2	10	8.2	3.8	0.96	1000
550-10	J12	11.3	10	8	3.8	0.93	1000
550-11	J10	12.2	11	8	3.8	1.04	1000

**Tubular rivet**



Art Code	A MM	B MM	C MM	D MM	Kgs/ 1000
----------	------	------	------	------	-----------

Art Code	A MM	B MM	C MM	D MM	Kgs/ 1000
----------	------	------	------	------	-----------

Art Code	A MM	B MM	C MM	D MM	Kgs/ pcs
----------	------	------	------	------	----------